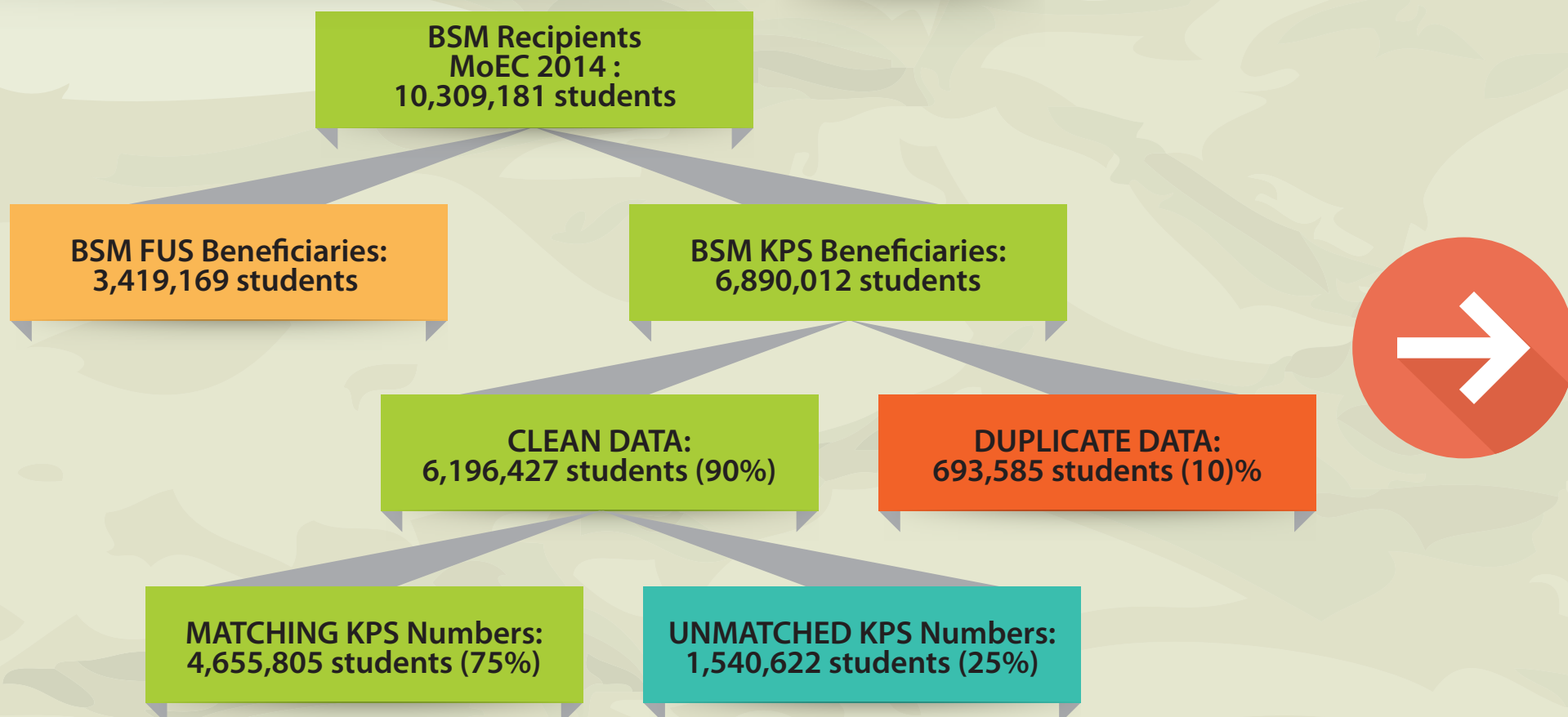


IMPROVING EDUCATION FOR THE POOR

BSM Administration Challenges



Example: 1 KPS used for 3,672 primary schoolstudents in South Pesisir District, West Sumatera

Matching the Data on BSM KPS Beneficiaries with Dapodik data

Education Level	KPS SP2D 2014	KPS DAPODIK	%
Primary	4.619.313	2.817.381	61
Junior High School	1.860.151	962.098	52
Senior High School	314.719	136.164	43
Vocational School	202.060	125.641	62
TOTAL	6.996.243	4.041.284	48

Source : KEMENDIKBUD

Evaluating BSM

6
provinces

6.477
households

12.275
BSM Beneficiary sample (7th Grade)

Data analysis shows that timely distribution of BSM funds increased 7th grade participation by as much as 6.6% ~ equivalent to 77 thousand students

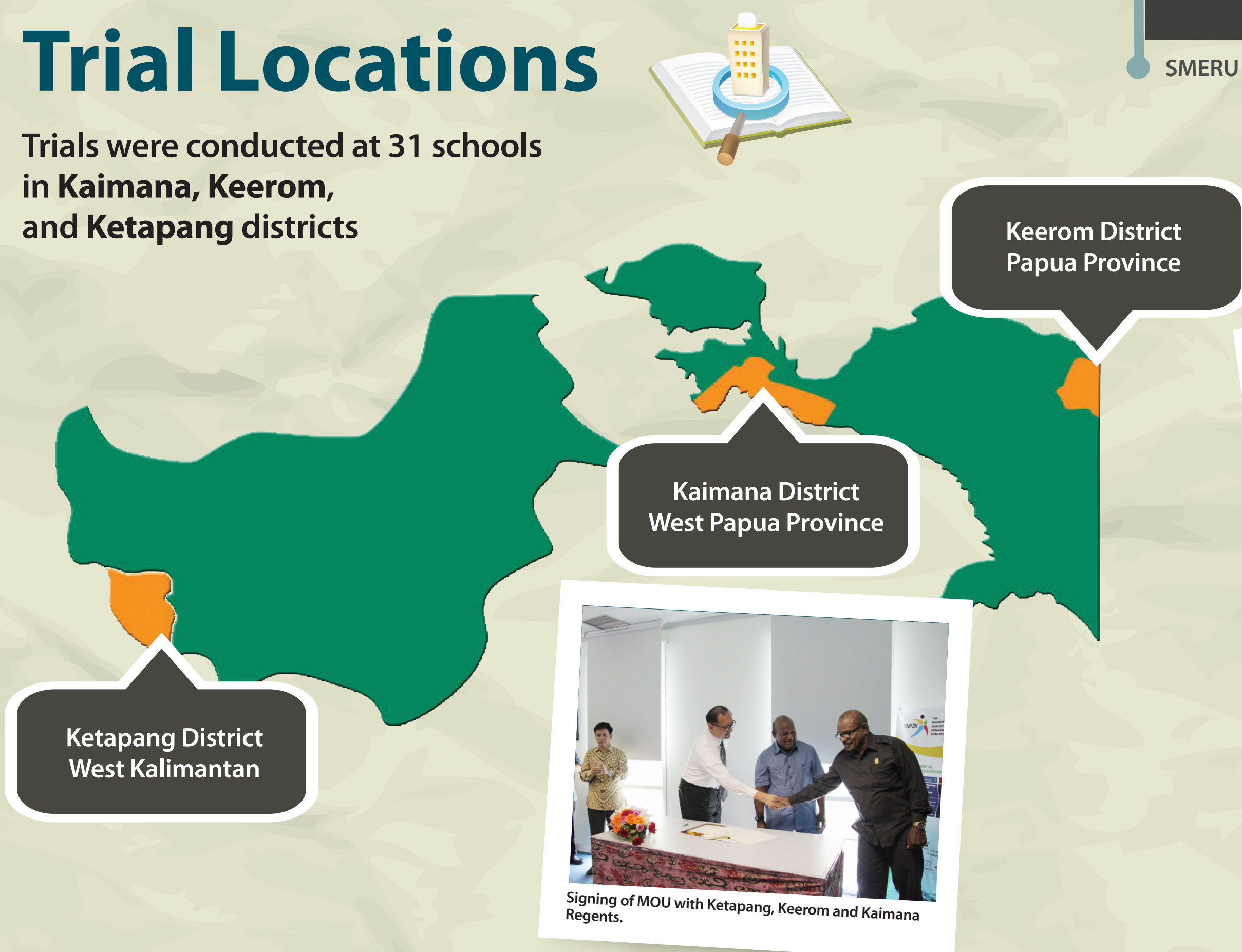
Behavioral Experiment

600
KPS household beneficiaries in Sukabumi, Bandung, Cianjur

- The distribution of brochures/leaflets does not significantly influence parental preferences for the education of their children.
- Socialisation through audio-visual media is associated with improvements in parental preferences, particularly for higher education for their children.

Trial Locations

Trials were conducted at 31 schools in Kaimana, Keerom, and Ketapang districts

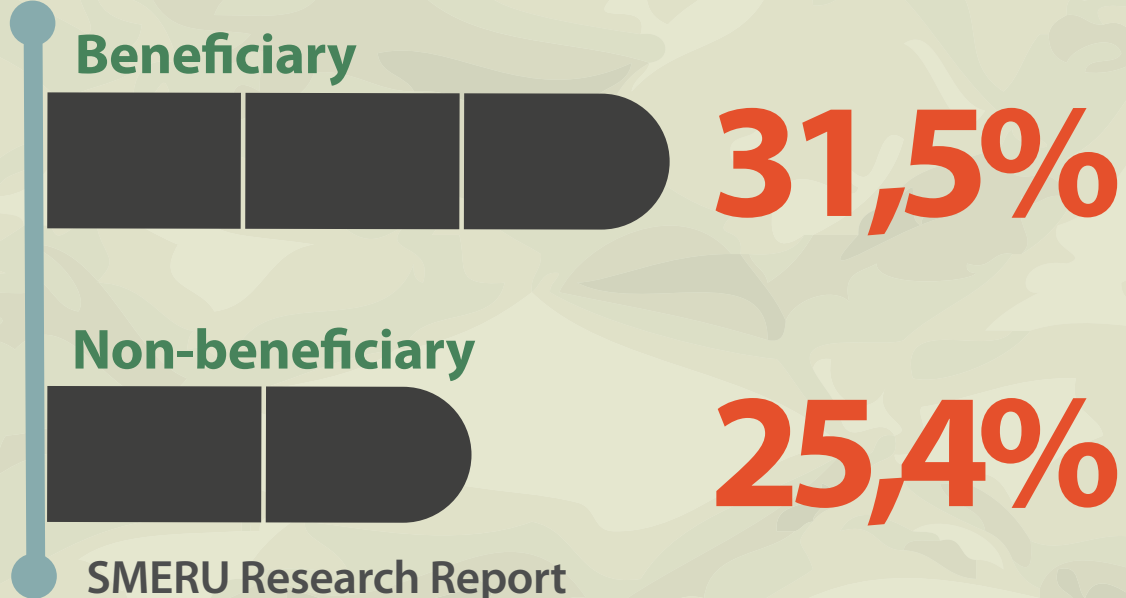


Signing of MOU with Ketapang, Keerom and Kaimana Regents.

Evaluating Teacher Wages and Benefits

Teachers' wages and benefits budget constitute **52,1%** of the total educational budget

Teacher Absenteeism



SMERU Research Report



Students do the jobs of their teachers in West Papua.

Building a Transparent and Accountable Mechanism to Provide Merit-Based Benefits

Objectives of Trials:

- 1 To link teachers' benefits with their attendance and performance
- 2 To involve community in supervision of teachers